

Caliper Bracket Instruction Manual

(For06-08-0025/06-08-164)

Product number 00-06-0044

Adaptation model	Monkey / Gorilla (Z50J-1300017 ~ 1510400) (Z50J-1600008 ~) (AB27-1000001 ~)
------------------	---

Thank you very much for purchasing our products.

Thank you so you will comply with the following matters at the time of use. Before installation, please check your always kit contents. If there is a point of notice event, Please contact us the dealer of purchase.


◎ If the description, such as photos or Illustration different with this part.

☆ Please read carefully before use ☆

- ◎ The use of ignoring the instructions that are written in the instruction manual, if an accident or damage has occurred, we can not assume any responsibility for compensation.
- ◎ This product installation and use, when a problem occurs to after market goods, guarantee other than this product, also can not assume any in any such matters.
- ◎ If it was the case or mounting that has been processed like a product, it will not be covered under warranty.
- ◎ It is not possible to inquire of the combination of other manufacturers.
- ◎ This product is the above-mentioned vehicle exclusive goods. Is not possible attached to the other vehicle. Please note.
- ◎ Product may have edges or protrusions. Be sure to wear working gloves.
(Please wear work gloves when working, even if a photo in this article show without work gloves.)
- ◎ This product is only for exclusive use with our plain hub & damper hub for rear disks, and cannot be used together with other manufacturers' products.
- ◎ When ordering repair parts, please quote Item No above or reference Nos in the figures in this Manual. Should you have any questions in ordering repair parts, please contact your local motorcycle dealer.
- ◎ This product is made exclusively for Takegawa's 12cm or 16cm extended swing arm.

 **Caution** When the handling of ignoring this display, property damage and human shows the assumption of what injury.

- When performing the work, etc., be sure during the cold (when the engine and the muffler is cold). (It may cause burns.)
- When performing the work, it should be made to prepare the tools for the job. (Breakage of parts, it may cause injury.)
- Do the work must always specified torque using a torque wrench. (Damage of bolts and nuts, and cause of dropout.)
- The product and the frame, might have edges or protrusions. When working, please wear work gloves to protect your hands. (It may cause injury.)
- Be sure to each part inspection before operation, check the loosening of the threaded portion, be sure to securely tighten the specified torque if there is loose. (It may cause detachment of the parts.)

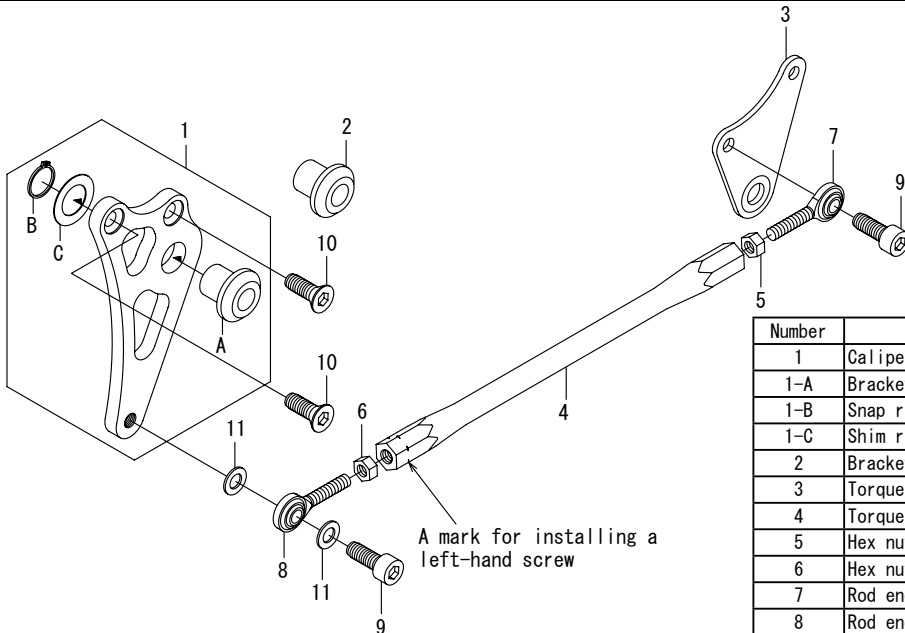
 **Warning** When the handling of ignoring this display people died, shows the contents of the serious injury possibility is assumed.

- During operation, when an abnormality occurs, immediately stop the vehicle in a safe place, please stop running. (It may lead to an accident.)
- When performing the work, do the work safely stabilize the vehicle in a horizontal location. (There is a risk of injury vehicle collapsed while working.)
- Inspection, maintenance, the instruction manual or, inspection methods such as service manuals, to protect the way, should be done correctly. (unsuitable inspection and maintenance, there is a risk that result to an accident.)
- When carrying out the inspection and maintenance, etc., if found damaged parts, replace the damaged parts to avoid possible to reuse the parts. (There is a risk that lead to accidents Continued use.)
- Plastic bags of product packaging, you can either be stored in a place that is out of reach of children, it should be discarded. (When the children or wearing, there is a risk of suffocation.)
- We recommend you to get the brake installed by a skilled mechanic at facilities with special instruments and tools. Otherwise, the wrong installation may cause accidents.

- ◎ Please note. Performance up, the design change, the product and the price in the cost up, etc. are subject to change without notice.
- ◎ Please be informed that we shall be held harmless against any claim against us whatsoever arising out of use of the products in racing and the like.
- ◎ Keep this manual stored until this product is discarded.

SPECIAL PARTS
TAKEGAWA

CONTACT Address : 3-5-16 Nishikiorihigashi Tondabayashi Osaka JAPAN
TEL: +81-721-25-1357 FAX: +81-721-24-5059 e-mail: english@takegawa.co.jp URL: http://www.takegawa.co.jp
Please contact with your name and country name provided. (Only English please)



Number	Product content	Quantity	Item Number
1	Caliper bracket COMP.	1	00-00-2024
1-A	Bracket sleeve	1	00-00-2028
1-B	Snap ring, 17mm	1	00-00-0069 (4 pcs)
1-C	Shim ring	1	00-00-0070
2	Bracket sleeve	1	00-00-2026
3	Torque rod bracket COMP.	1	00-00-2110
4	Torque rod, 290mm	1	00-00-2178
5	Hex nut, 8mm	1	00-00-0071 (2 pcs)
6	Hex nut, 8mm L	1	00-00-0072 (2 pcs)
7	Rod end, 8mm	1	00-00-0073
8	Rod end, 8mm L	1	00-00-0074
9	Socket cap screw, 8x25	2	00-00-0740 (5 pcs)
10	Flat head socket screw, 8x15	2	00-00-0001 (5 pcs)
11	Plain washer, 8mm	2	00-00-0076 (10 pcs)

※Please order in the repair parts are always repair part number. If it is not the part number order, you may not be able to order. Please be forewarned.
 It should be noted. In the case of parts that can not be separately shipment, please order a set part number.
 ※Repair parts may differ slightly from the kit contents in terms of shape, etc. There is no problem to use it. Please be forewarned.
 ※For the installation procedures, please refer to the installation manual for the Rear Disk Hub Kit.

■ Mounting procedure ※Please refer to the Genuine Service Manual for detailed mounting methods and specified torques that are not specifically described.

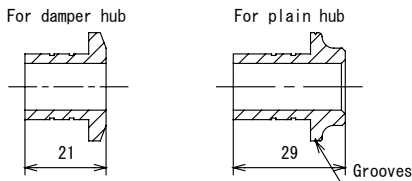
● How to install a caliper bracket

Floating type

- In the case of installing onto a plain hub

○ Detach a C ring from the caliper bracket complete to remove the sleeve and install the supplied sleeve. (The sleeve with grooves in the rim is the one for installation onto the plain hub.)

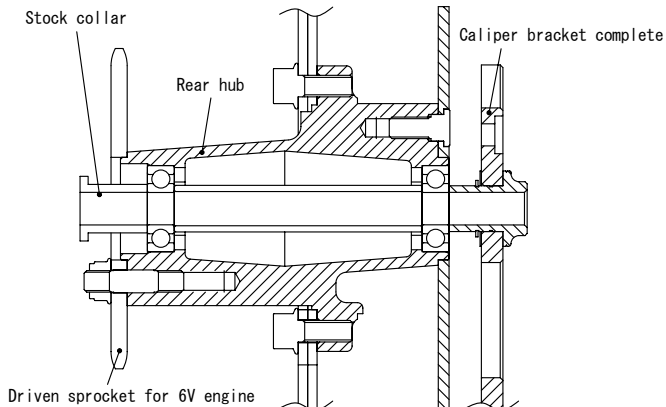
※ Be sure to apply grease to the sleeve.



○ Install the caliper to the caliper bracket with the supplied socket cap screw, and tighten the screw to the specified torque.
 ※ Apply thread lock cement to the thread of the bolt.

▲ Note: Be sure that you protect specified torque.
 Socket cap screw
 Torque : 25N · m (2.5kgf · m)

○ Install the stock collar, plain hub and caliper bracket in this order to the swing arm, and then put the axle shaft into the swing arm.
 ※ Apply a thin coat of grease to the axle shaft.



- In the case of installing onto the damper hub

○ Install the caliper to the caliper bracket with the supplied socket cap screw, and tight the screw to the specified torque.
 ※ Apply thread lock cement to the thread of the bolt.

▲ Note: Be sure that you protect specified torque.
 Socket cap screw
 Torque : 25N · m (2.5kgf · m)

○ Install the collar, retainer, spacer, damper hub, rear hub, and caliper bracket in this order to the swing arm, and then put the axle shaft into the swing arm.
 ※ Apply a thin coat of grease to the axle shaft.

