

Wet type slipper clutch kit TYPE-R Instruction Manual

(Wire type cross transmission only)

Product number	02-01-0112 (Buffing・Clear paint)
	02-01-0456 (Silver paint)

Adaptation model	Monkey/Gorilla(6V)	(Z50J-1300017 ~ 1805927)
	Monkey(12V)	(Z50J-2000001 ~) (AB27-1000001 ~ 1899999)
	Monkey(FI)	(AB27-1900001 ~)
	Gorilla(12V)	(Z50J-2500001 ~) (AB27-1000001 ~ 1899999)
	BENLY 50S	(CD50-2200005 ~)
	BENLY CD50	(CD50-2500001 ~)
	CD50	(CD50-2000001 ~)

Thank you very much for purchasing our products.
Thank you so you will comply with the following matters at the time of use. For use, make sure each kit contents, and please observe the specified items of each kit.
If there is a point of notice event, Please contact us the dealer of purchase.

◎ If the description, such as photos or Illustration different with this part.

☆ Please read carefully before use ☆

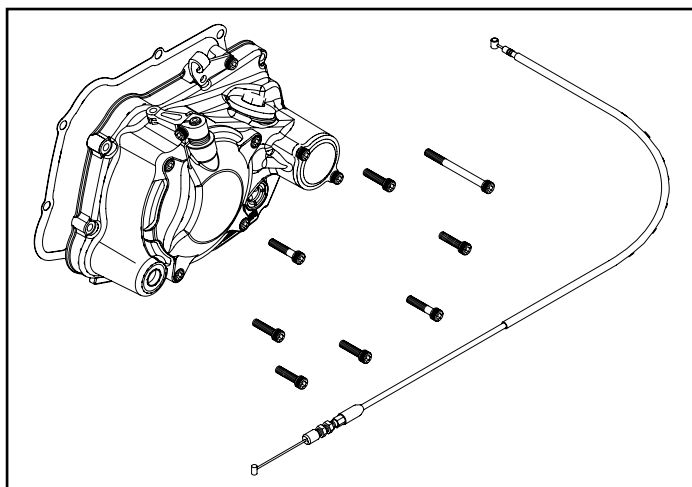
- ◎ The use ignoring the instructions that are written in the manual, if the accident or damage has occurred, we can not assume any responsibility for compensation.
- ◎ In this installation and use of the product, even if trouble occurs in other parts, do not do parts warranty other than this product.
- ◎ When it is machining like the products and mounting, do not covered under warranty.
- ◎ Please refrain from inquiries about the product and the combination of other companies.
- ◎ This product is adaptive models, frame number vehicle exclusive goods. Please note that it cannot be installed on other vehicles.
- ◎ Product may have edges or protrusions. Be sure to wear working gloves.
(Please wear work gloves when working, even if a photo in this article show without work gloves.)
- ◎ This manual and service manual is intended for people who have the basic skills and knowledge. When people who do not have the technology and knowledge to work, please note that might damaging the parts can not correct assembly.
- ◎ This product is thing which was set wet clutch cover kit and for cross-transmission vehicles, a wet slipper clutch inner kit. In assembly, please check the instruction manual that comes with each product.
- ◎ If you want to use to BENLY CL50 (CD50-4000001 ~), because in the clutch cable that comes with this kit (850mm) short, it is excluded from the adaptive model. For clutch cover, it can be installed by satisfying the following contents.
 - ・ Additional clutch cable (910mm) is required. <Item No.: 00-02-0107>
 - ・ Since the front stay nut of genuine up type muffler is interference, the insertion direction upper engine mount bolt to reverse, or needs to be replaced in a separate mount bolt / nut for C D50. Addition, genuine-up type muffler can not be installed.
Hex bolt, 8X113 <Honda genuine number: 90120-065-000>
Hexagon nut, 8MM <Honda genuine number: 94030-08000>
- ◎ Performance up, design change, product and price in cost up, etc. are subject to change without notice. Please acknowledge beforehand.
- ◎ For claims, only to products that have been recognized to be defective in material and processing, to extent within one month after purchase, we will repair or replace. However, if installation and usage is not correct, this does not apply. Any cost of repair or replace, etc. are not eligible.
- ◎ Keep this manual stored until this product is discarded.
- ※ Must use "auto-decompression camshaft" Due to the mechanism of the slipper clutch, the clutch will slip when the engine starts with standard (non-decomp) camshaft.
"Desmodromic" 4V Bore Up Kit and MONKEY(FI) engine are not available "auto decompression camshaft". Can be used standard(non-decomp) camshaft for these engines.

~ feature ~

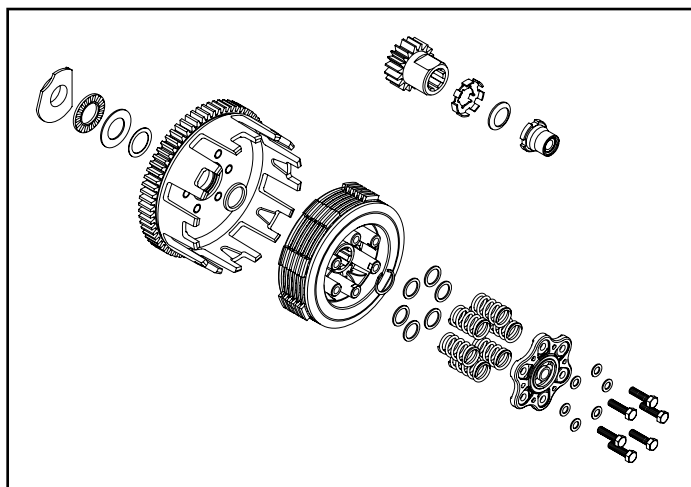
To assemble this set, our original wet type 4-speed, 5-speed, with any of the 6-speed cross-transmission kit, must be installed simultaneously.

Product content

02-01-0700/02-01-0447



02-01-0804



Item No.	Product Name	Qty
02-01-0700	Special clutch cover kit TYPE-R (wire type) (Buffing・Clear paint)	1
02-01-0447	Special clutch cover kit TYPE-R (wire type) (Silver paint)	1
02-01-0804	Special clutch inner kit TYPE-R (slipper clutch)	1

SPECIAL PARTS
TAKEGAWA

CONTACT Address : 3-5-16 Nishikiorihigashi Tondabayashi Osaka JAPAN
TEL: +81-721-25-1357 FAX: +81-721-24-5059 e-mail: english@takegawa.co.jp URL: http://www.takegawa.co.jp
Please contact with your name and country name provided. (Only English please)